

RESEARCH ARTICLE SUMMARY

MOSQUITO GENOMICS

Highly evolvable malaria vectors: The genomes of 16 *Anopheles* mosquitoesDaniel E. Neafsey,*† Robert M. Waterhouse,* *et al.*

INTRODUCTION: Control of mosquito vectors has historically proven to be an effective means of eliminating malaria. Human malaria is transmitted only by mosquitoes in the genus *Anopheles*, but not all species within the genus, or even all members of each vector species, are efficient malaria vectors. Variation in vectorial capacity for human malaria among *Anopheles* mosquito species is determined by many factors, including behavior, immunity, and life history.

RATIONALE: This variation in vectorial capacity suggests an underlying genetic/genomic plasticity that results in variation of key traits determining vectorial capacity within the genus. Sequencing the genome of *Anopheles gambiae*, the most important malaria vector in sub-Saharan Africa, has offered numerous insights into how that species became highly specialized to live among and feed upon humans and how susceptibility to mosquito control strategies is determined. Until very recently, similar genomic resources have not existed for other anophelins, limiting

comparisons to individual genes or sets of genomic markers with no genome-wide data to investigate attributes associated with vectorial capacity across the genus.

RESULTS: We sequenced and assembled the genomes and transcriptomes of 16 anophelins from Africa, Asia, Europe, and Latin America, spanning ~100 million years of evolution and chosen to represent a range of evolutionary distances from *An. gambiae*, a variety of geographic locations and ecological conditions, and varying degrees of vectorial capacity. Genome assembly quality reflected DNA template quality and homozygosity. Despite variation in contiguity, the assemblies were remarkably complete and searches for arthropod-wide single-copy orthologs generally revealed few missing genes. Genome annotation supported with RNA sequencing transcriptomes yielded between 10,738 and 16,149 protein-coding genes for each species. Relative to *Drosophila*, the closest dipteran genus for which equivalent genomic resources

exist, *Anopheles* exhibits a dynamic genomic evolutionary profile. Comparative analyses show a fivefold faster rate of gene gain and loss, elevated gene shuffling on the X chromosome, and more intron losses in *Anopheles*. Some determinants of vectorial capacity, such as chemosensory genes, do not show elevated turnover but instead diversify through protein-sequence changes. We also document evidence of variation in important reproductive phenotypes,

genes controlling immunity to *Plasmodium* malaria parasites and other microbes, genes encoding cuticular and salivary proteins, and genes conferring metabolic insecticide resistance. This dynamism of anopheline genes and genomes may contribute to their flexible capacity to take advantage of new ecological niches, including adapting to humans as primary hosts.

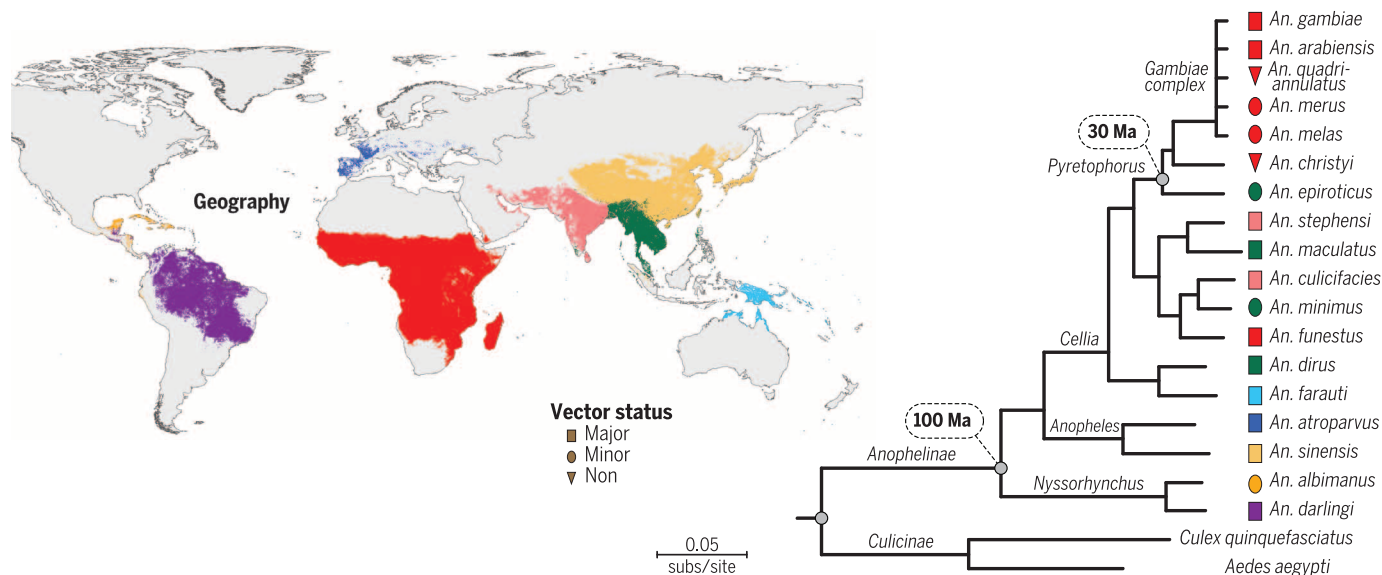
CONCLUSIONS: Anopheline mosquitoes exhibit a molecular evolutionary profile very distinct from *Drosophila*, and their genomes harbor strong evidence of functional variation in traits that determine vectorial capacity. These 16 new reference genome assemblies provide a foundation for hypothesis generation and testing to further our understanding of the diverse biological traits that determine vectorial capacity. ■

The complete list of authors and affiliations is available in the full article online.

*These authors contributed equally to this work.

†Corresponding author. E-mail: neafsey@broadinstitute.org (D.E.N.); nbesansk@nd.edu (N.J.B.)

Cite this article as D. E. Neafsey *et al.*, *Science* **347**, 1258522 (2015). DOI: 10.1126/science.1258522



Geography, vector status, and molecular phylogeny of the 16 newly sequenced anopheline mosquitoes and selected other dipterans.

The maximum likelihood molecular phylogeny of all sequenced anophelins and two mosquito outgroups was constructed from the aligned protein sequences of 1085 single-copy orthologs. Shapes between branch termini and species names indicate vector status and are colored according to geographic ranges depicted on the map. Ma, million years ago.

RESEARCH ARTICLE

MOSQUITO GENOMICS

Highly evolvable malaria vectors: The genomes of 16 *Anopheles* mosquitoes

Daniel E. Neafsey,^{1,*} Robert M. Waterhouse,^{2,3,4,5,*} Mohammad R. Abai,⁶ Sergey S. Aganezov,⁷ Max A. Alekseyev,⁷ James E. Allen,⁸ James Amon,⁹ Bruno Arcà,¹⁰ Peter Arensburger,¹¹ Gleb Artemov,¹² Lauren A. Assour,¹³ Hamidreza Basseri,⁶ Aaron Berlin,¹ Bruce W. Birren,¹ Stephanie A. Blandin,^{14,15} Andrew I. Brockman,¹⁶ Thomas R. Burkot,¹⁷ Austin Burt,¹⁸ Clara S. Chan,^{2,3} Cedric Chauve,¹⁹ Joanna C. Chiu,²⁰ Mikkel Christensen,⁸ Carlo Costantini,²¹ Victoria L. M. Davidson,²² Elena Deligianni,²³ Tania Dottorini,¹⁶ Vicky Dritsou,²⁴ Stacey B. Gabriel,²⁵ Wamdaogo M. Guelbeogo,²⁶ Andrew B. Hall,²⁷ Mira V. Han,²⁸ Thauing Hlaing,²⁹ Daniel S. T. Hughes,^{8,30} Adam M. Jenkins,³¹ Xiaofang Jiang,^{32,27} Irwin Jungreis,^{2,3} Evdoxia G. Kakani,^{33,34} Maryam Kamali,³⁵ Petri Kempainen,³⁶ Ryan C. Kennedy,³⁷ Ioannis K. Kirmizoglou,^{16,38} Lizette L. Koekemoer,³⁹ Njoroge Laban,⁴⁰ Nicholas Langridge,⁸ Mara K. N. Lawniczak,¹⁶ Manolis Lirakis,⁴¹ Neil F. Lobo,⁴² Ernesto Lowy,⁸ Robert M. MacCallum,¹⁶ Chunhong Mao,⁴³ Gareth Maslen,⁸ Charles Mbogo,⁴⁴ Jenny McCarthy,¹¹ Kristin Michel,²² Sara N. Mitchell,³³ Wendy Moore,⁴⁵ Katherine A. Murphy,²⁰ Anastasia N. Naumenko,³⁵ Tony Nolan,¹⁶ Eva M. Novoa,^{2,3} Samantha O'Loughlin,¹⁸ Chioma Oringanje,⁴⁵ Mohammad A. Oshaghi,⁶ Nazy Pakpour,⁴⁶ Philippos A. Papanthanos,^{16,24} Ashley N. Peery,³⁵ Michael Povelones,⁴⁷ Anil Prakash,⁴⁸ David P. Price,^{49,50} Ashok Rajaraman,¹⁹ Lisa J. Reimer,⁵¹ David C. Rinker,⁵² Antonis Rokas,^{52,53} Tanya L. Russell,¹⁷ N'Fale Sagnon,²⁶ Maria V. Sharakhova,³⁵ Terrance Shea,¹ Felipe A. Simão,^{4,5} Frederic Simard,²¹ Michel A. Slotman,⁵⁴ Pradya Somboon,⁵⁵ Vladimir Stegniy,¹² Claudio J. Struchiner,^{56,57} Gregg W. C. Thomas,⁵⁸ Marta Tojo,⁵⁹ Pantelis Topalis,²³ José M. C. Tubio,⁶⁰ Maria F. Unger,⁴² John Vontas,⁴¹ Catherine Walton,³⁶ Craig S. Wilding,⁶¹ Judith H. Willis,⁶² Yi-Chieh Wu,^{2,3,63} Guiyun Yan,⁶⁴ Evgeny M. Zdobnov,^{4,5} Xiaofan Zhou,⁵³ Flaminia Catteruccia,^{33,34} George K. Christophides,¹⁶ Frank H. Collins,⁴² Robert S. Cornman,⁶² Andrea Crisanti,^{16,24} Martin J. Donnelly,^{51,65} Scott J. Emrich,¹³ Michael C. Fontaine,^{42,66} William Gelbart,⁶⁷ Matthew W. Hahn,^{68,58} Immo A. Hansen,^{49,50} Paul I. Howell,⁶⁹ Fotis C. Kafatos,¹⁶ Manolis Kellis,^{2,3} Daniel Lawson,⁸ Christos Louis,^{41,23,24} Shirley Luckhart,⁴⁶ Marc A. T. Muskavitch,^{31,70} José M. Ribeiro,⁷¹ Michael A. Riehle,⁴⁵ Igor V. Sharakhov,^{35,27} Zhijian Tu,^{27,32} Laurence J. Zwiebel,⁷² Nora J. Besansky⁴²†

Variation in vectorial capacity for human malaria among *Anopheles* mosquito species is determined by many factors, including behavior, immunity, and life history. To investigate the genomic basis of vectorial capacity and explore new avenues for vector control, we sequenced the genomes of 16 anopheline mosquito species from diverse locations spanning ~100 million years of evolution. Comparative analyses show faster rates of gene gain and loss, elevated gene shuffling on the X chromosome, and more intron losses, relative to *Drosophila*. Some determinants of vectorial capacity, such as chemosensory genes, do not show elevated turnover but instead diversify through protein-sequence changes. This dynamism of anopheline genes and genomes may contribute to their flexible capacity to take advantage of new ecological niches, including adapting to humans as primary hosts.

Malaria is a complex disease, mediated by obligate eukaryotic parasites with a life cycle requiring adaptation to both vertebrate hosts and mosquito vectors. These relationships create a rich coevolutionary triangle. Just as *Plasmodium* parasites have adapted to their diverse hosts and vectors, infection by *Plasmodium* parasites has reciprocally induced adaptive evolutionary responses in humans and other vertebrates (1) and has also influenced

mosquito evolution (2). Human malaria is transmitted only by mosquitoes in the genus *Anopheles*, but not all species within the genus, or even all members of each vector species, are efficient malaria vectors. This suggests an underlying genetic/genomic plasticity that results in variation of key traits determining vectorial capacity within the genus.

In all, five species of *Plasmodium* have adapted to infect humans and are transmitted by ~60 of

the 450 known species of anopheline mosquitoes (3). Sequencing the genome of *Anopheles gambiae*, the most important malaria vector in sub-Saharan Africa, has offered numerous insights into how that species became highly specialized to live among and feed upon humans and how susceptibility to mosquito control strategies is determined (4). Until very recently (5–7), similar genomic resources have not existed for other anophelines, limiting comparisons to individual genes or sets of genomic markers with no genome-wide data to investigate attributes associated with vectorial capacity across the genus.

Thus, we sequenced and assembled the genomes and transcriptomes of 16 anophelines from Africa, Asia, Europe, and Latin America. We chose these 16 species to represent a range of evolutionary distances from *An. gambiae*, a variety of geographic locations and ecological conditions, and varying degrees of vectorial capacity (8) (Fig. 1, A and B). For example, *An. quadrimaculatus*, although extremely closely related to *An. gambiae*, feeds preferentially on bovines rather than humans, limiting its potential to transmit human malaria. *An. merus*, *An. melas*, *An. farauti*, and *An. albimanus* females can lay eggs in salty or brackish water, instead of the freshwater sites required by other species. With a focus on species most closely related to *An. gambiae* (9), the sampled anophelines span the three main subgenera that shared a common ancestor ~100 million years ago (Ma) (10).

Materials and methods summary

Genomic DNA and whole-body RNA were obtained from laboratory colonies and wild-caught specimens (tables S1 and S2), with samples for nine species procured from newly established isofemale colonies to reduce heterozygosity. Illumina sequencing libraries spanning a range of insert sizes were constructed, with ~100-fold paired-end 101–base pair (bp) coverage generated for small (180 bp) and medium (1.5 kb) insert libraries and lower coverage for large (38 kb) insert libraries (table S3). DNA template for the small and medium input libraries was sourced from single female mosquitoes from each species to further reduce heterozygosity. High-molecular-weight DNA template for each large insert library was derived from pooled DNA obtained from several hundred mosquitoes. ALLPATHS-LG (11) genome assemblies were produced using the “haploidify” option to reduce haplotype assemblies caused by high heterozygosity. Assembly quality reflected DNA template quality and homozygosity, with a mean scaffold N50 of 3.6 Mb, ranging to 18.1 Mb for *An. albimanus* (table S4). Despite variation in contiguity, the assemblies were remarkably complete and searches for arthropod-wide single-copy orthologs generally revealed few missing genes (fig. S1) (12).

Genome annotation with MAKER (13) supported with RNA sequencing (RNAseq) of transcriptomes (produced from pooled male and female larvae, pupae, and adults) (table S5) and comprehensive noncoding RNA gene prediction (fig. S2) yielded relatively complete gene sets

(fig. S3), with between 10,738 and 16,149 protein-coding genes identified for each species. Gene count was generally commensurate with assembly contiguity (table S6). Some of this variation in total gene counts may be attributed to the challenges of gene annotations with variable levels of assembly contiguity and supporting RNAseq data. To estimate the prevalence of erroneous gene model fusions and/or fragmentations, we compared the new gene annotations to *An. gambiae* gene models and found an average of 3.3% and 9.7% potentially fused and fragmented gene models, respectively. For analyses described below that may be sensitive to variation in gene model accuracy or gene set completeness, we have conducted sensitivity analyses to rule out confounding results from these factors (12).

Rapidly evolving genes and genomes

Orthology delineation identified lineage-restricted and species-specific genes, as well as ancient genes found across insect taxa, of which universal single-copy orthologs were employed to estimate the molecular species phylogeny (Fig. 1, B and C, and fig. S4). Analysis of codon frequencies in these orthologs revealed that anophelines, unlike drosophilids, exhibit relatively uniform codon usage preferences (fig. S5).

Polytene chromosomes have provided a glimpse into anopheline chromosome evolution (14). Our genome-sequence-based view confirmed the

cytological observations and offers many new insights. At the base-pair level, ~90% of the non-gapped and nonmasked *An. gambiae* genome (i.e., excluding transposable elements, as detailed in table S7) is alignable to the most closely related species, whereas only ~13% aligns to the most distant (Fig. 1D, fig. S6, and table S8), with reduced alignability in centromeres and on the X chromosome (Fig. 1D). At chromosomal levels, mapping data anchored 35 to 76% of the *An. stephensi*, *An. funestus*, *An. atroparvus*, and *An. albimanus* genome assemblies to chromosomal arms (tables S9 to S12). Analysis of genes in anchored regions showed that synteny at the whole-arm level is highly conserved, despite several whole-arm translocations (Fig. 2A and table S13). In contrast, small-scale rearrangements disrupt gene colinearity within arms over time, leading to extensive shuffling of gene order over a time scale of 29 million years or more (10, 15) (Fig. 2B and fig. S7). As in *Drosophila*, rearrangement rates are higher on the X chromosome than on autosomes (Fig. 2C and tables S14 to S16). However, the difference is significantly more pronounced in *Anopheles*, where X chromosome rearrangements are more frequent by a factor of 2.7 than autosomal rearrangements; in *Drosophila*, the corresponding ratio is only 1.2 (*t* test, $t_{10} = 7.3$; $P < 1 \times 10^{-5}$) (fig. S8). The X chromosome is also notable for a significant degree of observed gene movement to other chromosomes

relative to *Drosophila* (one sample proportion test, $P < 2.2 \times 10^{-16}$) (Fig. 2D and tables S17 and S18), as was previously noted for *Anopheles* relative to *Aedes* (16), further underscoring its distinctive evolutionary profile in *Anopheles* compared with other dipteran genera.

Such dynamic gene shuffling and movement may be facilitated by the multiple families of DNA transposons and long terminal repeat (LTR) and non-LTR retroelements found in all genomes (table S7), as well as a weaker dosage compensation phenotype in *Anopheles* compared with *Drosophila* (17). Despite such shuffling, comparing genomic locations of orthologs can be successfully employed to reconstruct ancestral chromosomal arrangements (fig. S9) and to confidently improve assembly contiguity (tables S19 to S21).

Copy-number variation in homologous gene families also reveals striking evolutionary dynamism. Analysis of 11,636 gene families with CAFE 3 (18) indicates a rate of gene gain/loss higher by a factor of at least 5 than that observed for 12 *Drosophila* genomes (19). Overall, these *Anopheles* genomes exhibit a rate of gain or loss per gene per million years of 3.12×10^{-3} compared with 5.90×10^{-4} for *Drosophila*, suggesting substantially higher gene turnover within anophelines relative to fruit flies. This fivefold greater gain/loss rate in anophelines holds true under models that account for uncertainty in

¹Genome Sequencing and Analysis Program, Broad Institute, 415 Main Street, Cambridge, MA 02142, USA. ²Computer Science and Artificial Intelligence Laboratory, Massachusetts Institute of Technology, 32 Vassar Street, Cambridge, MA 02139, USA. ³The Broad Institute of Massachusetts Institute of Technology and Harvard, 415 Main Street, Cambridge, MA 02142, USA. ⁴Department of Genetic Medicine and Development, University of Geneva Medical School, Rue Michel-Servet 1, 1211 Geneva, Switzerland. ⁵Swiss Institute of Bioinformatics, Rue Michel-Servet 1, 1211 Geneva, Switzerland. ⁶Department of Medical Entomology and Vector Control, School of Public Health and Institute of Health Researches, Tehran University of Medical Sciences, Tehran, Iran. ⁷George Washington University, Department of Mathematics and Computational Biology Institute, 45085 University Drive, Ashburn, VA 20147, USA. ⁸European Molecular Biology Laboratory, European Bioinformatics Institute, EMBL-EBI, Wellcome Trust Genome Campus, Hinxton, Cambridge CB10 1SD, UK. ⁹National Vector Borne Disease Control Programme, Ministry of Health, Tafea Province, Vanuatu. ¹⁰Department of Public Health and Infectious Diseases, Division of Parasitology, Sapienza University of Rome, Piazzale Aldo Moro 5, 00185 Rome, Italy. ¹¹Department of Biological Sciences, California State Polytechnic-Pomona, 3801 West Temple Avenue, Pomona, CA 91768, USA. ¹²Tomsk State University, 36 Lenina Avenue, Tomsk, Russia. ¹³Department of Computer Science and Engineering, Eck Institute for Global Health, 211B Cushing Hall, University of Notre Dame, Notre Dame, IN 46556, USA. ¹⁴Inserm, U963, F-67084 Strasbourg, France. ¹⁵CNRS, UPR9022, IBMC, F-67084 Strasbourg, France. ¹⁶Department of Life Sciences, Imperial College London, South Kensington Campus, London SW7 2AZ, UK. ¹⁷Faculty of Medicine, Health and Molecular Science, Australian Institute of Tropical Health Medicine, James Cook University, Cairns 4870, Australia. ¹⁸Department of Life Sciences, Imperial College London, Silwood Park Campus, Ascot SL5 7PY, UK. ¹⁹Department of Mathematics, Simon Fraser University, 8888 University Drive, Burnaby, BC V5A 1S6, Canada. ²⁰Department of Entomology and Nematology, One Shields Avenue, University of California-Davis, Davis, CA 95616, USA. ²¹Institut de Recherche pour le Développement, Unités Mixtes de Recherche Maladies Infectieuses et Vecteurs Écologie, Génétique, Évolution et Contrôle, 911, Avenue Agropolis, BP 64501 Montpellier, France. ²²Division of Biology, Kansas State University, 271 Chalmers Hall, Manhattan, KS 66506, USA. ²³Institute of Molecular Biology and Biotechnology, Foundation for Research and Technology, Hellas, Nikolaou Plastira 100 GR-70013, Heraklion, Crete, Greece. ²⁴Centre of Functional Genomics, University of Perugia, Perugia, Italy. ²⁵Genomics Platform, Broad Institute, 415 Main Street, Cambridge, MA 02142, USA. ²⁶Centre National de Recherche et de Formation sur le Paludisme, Ouagadougou 01 BP 2208, Burkina Faso. ²⁷Program of Genetics, Bioinformatics, and Computational Biology, Virginia Polytechnic Institute and State University, Blacksburg, VA 24061, USA. ²⁸School of Life Sciences, University of Nevada, Las Vegas, NV 89154, USA. ²⁹Department of Medical Research, No. 5 Ziwaka Road, Dagon Township, Yangon 1191, Myanmar. ³⁰Baylor College of Medicine, 1 Baylor Plaza, Houston, TX 77030, USA. ³¹Boston College, 140 Commonwealth Avenue, Chestnut Hill, MA 02467, USA. ³²Department of Biochemistry, Virginia Polytechnic Institute and State University, Blacksburg, VA 24061, USA. ³³Harvard School of Public Health, Department of Immunology and Infectious Diseases, Boston, MA 02115, USA. ³⁴Dipartimento di Medicina Sperimentale e Scienze Biochimiche, Università degli Studi di Perugia, Perugia, Italy. ³⁵Department of Entomology, Virginia Polytechnic Institute and State University, Blacksburg, VA 24061, USA. ³⁶Computational Evolutionary Biology Group, Faculty of Life Sciences, University of Manchester, Oxford Road, Manchester M13 9PT, UK. ³⁷Department of Bioengineering and Therapeutic Sciences, University of California, San Francisco, CA 94143, USA. ³⁸Bioinformatics Research Laboratory, Department of Biological Sciences, New Campus, University of Cyprus, CY 1678 Nicosia, Cyprus. ³⁹Wits Research Institute for Malaria, Faculty of Health Sciences, and Vector Control Reference Unit, National Institute for Communicable Diseases of the National Health Laboratory Service, Sandringham 2131, Johannesburg, South Africa. ⁴⁰National Museums of Kenya, P.O. Box 40658-00100, Nairobi, Kenya. ⁴¹Department of Biology, University of Crete, 700 13 Heraklion, Greece. ⁴²Eck Institute for Global Health and Department of Biological Sciences, University of Notre Dame, 317 Galvin Life Sciences Building, Notre Dame, IN 46556, USA. ⁴³Virginia Bioinformatics Institute, 1015 Life Science Circle, Virginia Polytechnic Institute and State University, Blacksburg, VA 24061, USA. ⁴⁴Kenya Medical Research Institute-Wellcome Trust Research Programme, Centre for Geographic Medicine Research - Coast, P.O. Box 230-80108, Kilifi, Kenya. ⁴⁵Department of Entomology, 1140 East South Campus Drive, Forbes 410, University of Arizona, Tucson, AZ 85721, USA. ⁴⁶Department of Medical Microbiology and Immunology, School of Medicine, University of California Davis, One Shields Avenue, Davis, CA 95616, USA. ⁴⁷Department of Pathobiology, University of Pennsylvania School of Veterinary Medicine, 3800 Spruce Street, Philadelphia, PA 19104, USA. ⁴⁸Regional Medical Research Centre NE, Indian Council of Medical Research, P.O. Box 105, Dibrugarh-786 001, Assam, India. ⁴⁹Department of Biology, New Mexico State University, Las Cruces, NM 88003, USA. ⁵⁰Molecular Biology Program, New Mexico State University, Las Cruces, NM 88003, USA. ⁵¹Department of Vector Biology, Liverpool School of Tropical Medicine, Pembroke Place, Liverpool, L3 5QA, UK. ⁵²Center for Human Genetics Research, Vanderbilt University Medical Center, Nashville, TN 37235, USA. ⁵³Department of Biological Sciences, Vanderbilt University, Nashville, TN 37235, USA. ⁵⁴Department of Entomology, Texas A&M University, College Station, TX 77807, USA. ⁵⁵Department of Parasitology, Faculty of Medicine, Chiang Mai University, Chiang Mai 50200, Thailand. ⁵⁶Fundação Oswaldo Cruz, Avenida Brasil 4365, RJ Brazil. ⁵⁷Instituto de Medicina Social, Universidade do Estado do Rio de Janeiro, Rio de Janeiro, Rio de Janeiro, Brazil. ⁵⁸School of Informatics and Computing, Indiana University, Bloomington, IN 47405, USA. ⁵⁹Department of Physiology, School of Medicine, Center for Research in Molecular Medicine and Chronic Diseases, Instituto de Investigaciones Sanitarias, University of Santiago de Compostela, Santiago de Compostela, A Coruña, Spain. ⁶⁰Wellcome Trust Sanger Institute, Hinxton, Cambridgeshire, CB10 1SA, UK. ⁶¹School of Natural Sciences and Psychology, Liverpool John Moores University, Liverpool L3 3AF, UK. ⁶²Department of Cellular Biology, University of Georgia, Athens, GA 30602, USA. ⁶³Department of Computer Science, Harvey Mudd College, Claremont, CA 91711, USA. ⁶⁴Program in Public Health, College of Health Sciences, University of California, Irvine, Hewitt Hall, Irvine, CA 92697, USA. ⁶⁵Malaria Programme, Wellcome Trust Sanger Institute, Cambridge CB10 1SJ, UK. ⁶⁶Centre of Evolutionary and Ecological Studies (Marine Evolution and Conservation group), University of Groningen, Nijenborgh 7, NL-9747 AG Groningen, Netherlands. ⁶⁷Department of Molecular and Cellular Biology, Harvard University, 16 Divinity Avenue, Cambridge, MA 02138, USA. ⁶⁸Department of Biology, Indiana University, Bloomington, IN 47405, USA. ⁶⁹Centers for Disease Control and Prevention, 1600 Clifton Road NE MSG49, Atlanta, GA 30329, USA. ⁷⁰Biogen Idec, 14 Cambridge Center, Cambridge, MA 02142, USA. ⁷¹Laboratory of Malaria and Vector Research, National Institute of Allergy and Infectious Diseases, 12735 Twinbrook Parkway, Rockville, MD 20852, USA. ⁷²Departments of Biological Sciences and Pharmacology, Institutes for Chemical Biology, Genetics and Global Health, Vanderbilt University and Medical Center, Nashville, TN 37235, USA.

*These authors contributed equally to this work. †Corresponding author. E-mail: neafsey@broadinstitute.org (D.E.N.); nbesansk@nd.edu (N.J.B.)

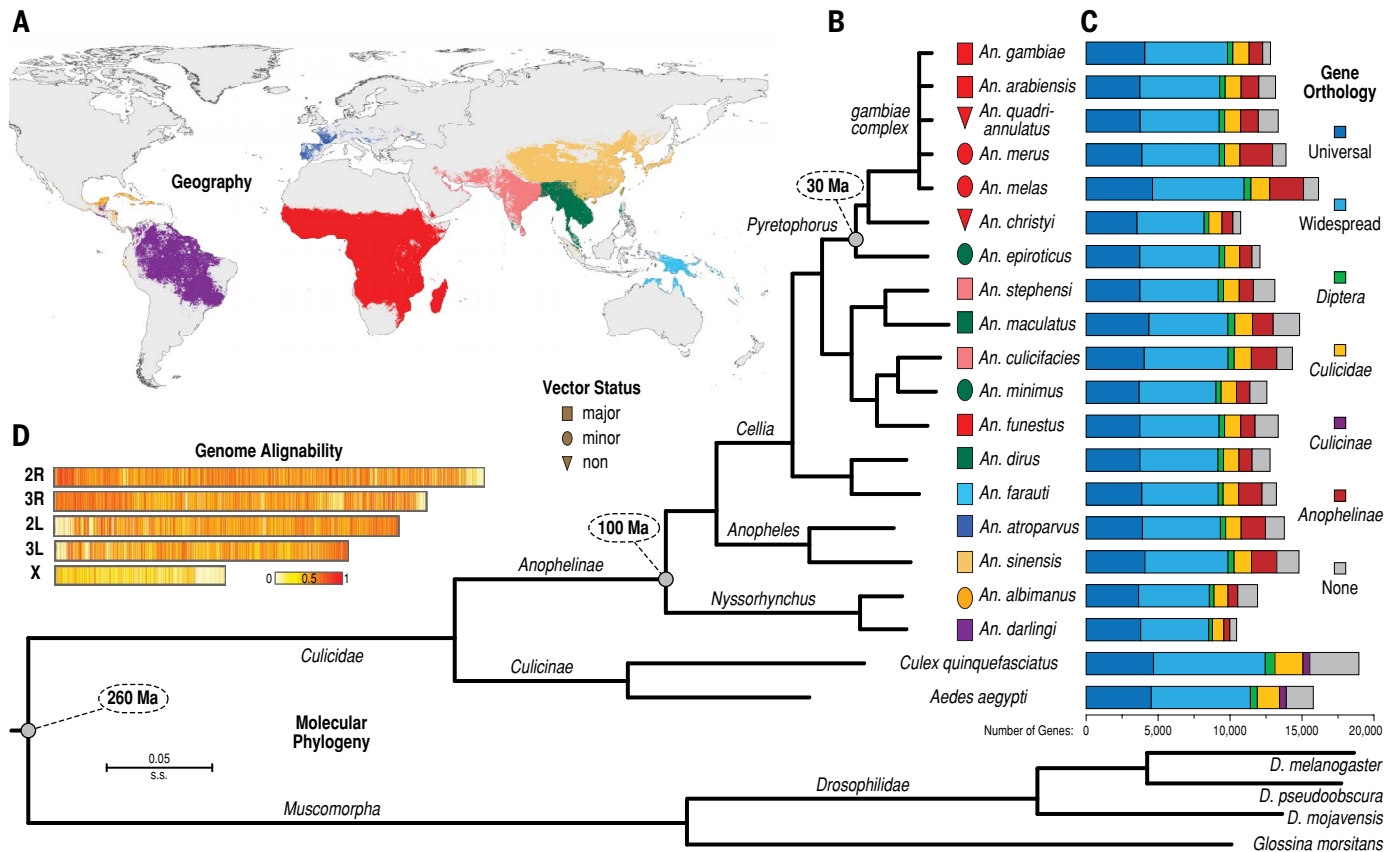


Fig. 1. Geography, vector status, molecular phylogeny, gene orthology, and genome alignability of the 16 newly sequenced anopheline mosquitoes and selected other dipterans. (A) Global geographic distributions of the 16 sampled anophelines and the previously sequenced *An. gambiae* and *An. darlingi*. Ranges are colored for each species or group of species as shown in (B), e.g., light blue for *An. farauti*. (B) The maximum likelihood molecular phylogeny of all sequenced anophelines and selected dipteran outgroups. Shapes between branch termini and species names indicate vector status

(rectangles, major vectors; ellipses, minor vectors, triangles, nonvectors) and are colored according to geographic ranges shown in (A). (C) Bar plots show total gene counts for each species partitioned according to their orthology profiles, from ancient genes found across insects to lineage-restricted and species-specific genes. (D) Heat map illustrating the density (in 2-kb sliding windows) of whole-genome alignments along the lengths of *An. gambiae* chromosomal arms: from white where *An. gambiae* aligns to no other species to red where *An. gambiae* aligns to all the other anophelines.

gene family sizes at the tips of the species tree due to annotation or assembly errors and is not sensitive to inclusion or exclusion of taxa affecting the root age of the tree nor to the exclusion of taxa with the poorest assemblies and gene sets (fig. S10 and tables S22 and S23). Examples include expansions of cuticular proteins in *An. arabiensis* and neurotransmitter-gated ion channels in *An. albimanus* (table S24).

The evolutionary dynamism of *Anopheles* genes extends to their architecture. Comparisons of single-copy orthologs at deeper phylogenetic depths showed losses of introns at the root of the true fly order Diptera and revealed continued losses as the group diversified into the lineages leading to fruit flies and mosquitoes. However, anopheline orthologs have sustained greater intron loss than drosophilids, leading to a relative paucity of introns in the genes of extant anophelines (fig. S11 and table S25). Comparative analysis also revealed that gene fusion and fission played a substantial role in the evolution of mosquito genes, with apparent rearrangements affecting an average of 10.1% of

all genes in the genomes of the 10 species with the most contiguous assemblies (fig. S12). Furthermore, gene boundaries can be flexible; whole genome alignments identified 325 candidates for stop-codon readthrough (fig. S13 and table S26).

Because molecular evolution of protein-coding sequences is a well-known source of phenotypic change, we compared evolutionary rates among different functional categories of anopheline orthologs. We quantified evolutionary divergence in terms of protein sequence identity of aligned orthologs and the d_N/d_S statistic (ratio of nonsynonymous to synonymous substitutions) computed using PAML (22, 20). Among curated sets of genes linked to vectorial capacity or species-specific traits against a background of functional categories defined by Gene Ontology or InterPro annotations, odorant and gustatory receptors show high evolutionary rates and male accessory gland proteins exhibit exceptionally high d_N/d_S ratios (Fig. 3, figs. S14 and S15, and tables S27 to S29). Rapid divergence in functional categories related to malaria transmission and/or mosquito control strategies

led us to examine the genomic basis of several facets of anopheline biology in closer detail.

Insights into mosquito biology and vectorial capacity

Mosquito reproductive biology evolves rapidly and presents a compelling target for vector control. This is exemplified by the *An. gambiae* male accessory gland protein (Acp) cluster on chromosome 3R (21, 22), where conservation is mostly lost outside the *An. gambiae* species complex (fig. S16). In *Drosophila*, male-biased genes such as Acp's tend to evolve faster than loci without male-biased expression (23–25). We looked for a similar pattern in anophelines after assessing each gene for sex-biased expression using microarray and RNAseq data sets for *An. gambiae* (12). In contrast to *Drosophila*, female-biased genes show dramatically faster rates of evolution across the genus than male-biased genes (Wilcoxon rank sum test, $P = 5 \times 10^{-4}$) (fig. S17).

Differences in reproductive genes among anophelines may provide insight into the origin and function of sex-related traits. During

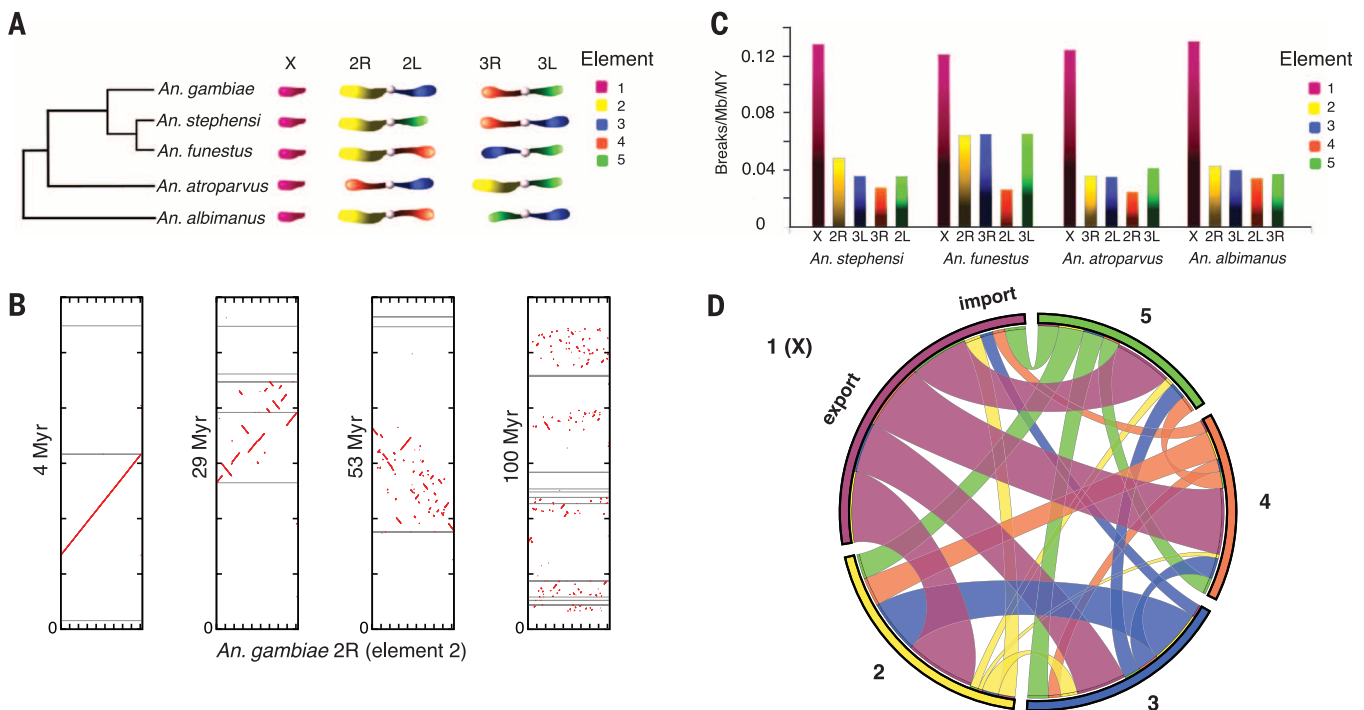


Fig. 2. Patterns of anopheline chromosomal evolution. (A) Anopheline genomes have conserved gene membership on chromosome arms (“elements”; colored and labeled 1 to 5). Unlike *Drosophila*, chromosome elements reshuffle between chromosomes via translocations as intact elements and do not show fissions or fusions. The tree depicts the supported molecular topology for the species studied. (B) Conserved synteny blocks decay rapidly within chromosomal arms as the phylogenetic distance increases between species. Moving left to right, the dot-plot panels show gene-level synteny between chromosome 2R of *An. gambiae* (x axis) and inferred ancestral sequences (y axes; inferred using PATHGROUPS) at increasing evolutionary time scales (million years ago) estimated by an ultrametric phylogeny. Gray horizontal

lines represent scaffold breaks. Discontinuity of the red lines/dots indicates rearrangement. (C) Anopheline X chromosomes exhibit higher rates of rearrangement ($P < 1 \times 10^{-5}$), measured as breaks per Mb per million years, compared with autosomes, despite a paucity of polymorphic inversions on the X. (D) The anopheline X chromosome also displays a higher rate of gene movement to other chromosomal arms than any of the autosomes. Chromosomal elements are labeled around the perimeter; internal bands are colored according to the chromosomal element source and match element colors in (A) and (C). Bands are sized to indicate the relative ratio of genes imported versus exported for each chromosomal element and the relative allocation of exported genes to other elements.

copulation, *An. gambiae* males transfer a gelatinous mating plug, a complex of seminal proteins, lipids, and hormones that are essential for successful sperm storage by females and for reproductive success (26–28). Coagulation of the plug is mediated by a seminal transglutaminase (*TG3*), which is found in anophelines but is absent in other mosquito genera that do not form a mating plug (26). We examined *TG3* and its two paralogs (*TG1* and *TG2*) in the sequenced anophelines and investigated the rate of evolution of each gene (Fig. 4A). Silent sites were saturated at the whole-genus level, making d_S difficult to estimate reliably, but *TG1* (the gene presumed to be ancestral owing to broadest taxonomic representation) exhibited the lowest rate of amino acid change ($d_N = 0.20$), *TG2* exhibited an intermediate rate ($d_N = 0.93$), and the anopheline-specific *TG3* has evolved even more rapidly ($d_N = 1.50$), perhaps because of male/male or male/female evolutionary conflict. Note that plug formation appears to be a derived trait within anophelines, because it is not exhibited by *An. albimanus* and intermediate, poorly coagulated plugs were observed in taxa descending from early-branching lineages within the genus (table S30). Functional studies of mating plugs

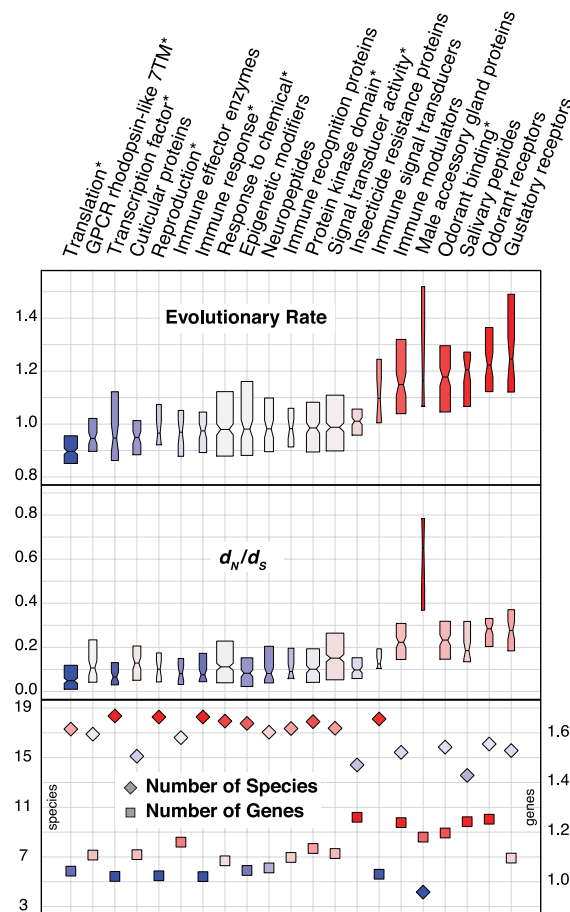
will be necessary to understand what drove the origin and rapid evolution of *TG3*.

Proteins that constitute the mosquito cuticular exoskeleton play important roles in diverse aspects of anopheline biology, including development, ecology, and insecticide resistance, and constitute approximately 2% of all protein-coding genes (29). Comparisons among dipterans have revealed numerous amplifications of cuticular protein (CP) genes undergoing concerted evolution at physically clustered loci (30–33). We investigated the extent and time scale of gene cluster homogenization within anophelines by generating phylogenies of orthologous gene clusters (fig. S18 and table S31). Throughout the genus, these gene clusters often group phylogenetically by species rather than by position within tandem arrays, particularly in a subset of clusters. These include the 3RB and 3RC clusters of CP genes (30), the CPLCG group A and CPLCW clusters found elsewhere on 3R (32), and six tandemly arrayed genes on 3L designated *CPFL2* through *CPFL7* (34). CPLCW genes occur in a head-to-head arrangement with CPLCG group A genes and exhibit highly conserved intergenic sequences (fig. S19). Furthermore, transcript localization studies using in situ hybridization

revealed identical spatial expression patterns for CLPCW and CPLCG group A gene pairs suggestive of coregulation (fig. S19). For these five gene clusters, complete grouping by organismal lineage was observed for most deep nodes as well as for many individual species outside the shallow *An. gambiae* species complex (Fig. 4B), consistent with a relatively rapid (less than 20 million years) homogenization of sequences via concerted evolution. The emerging pattern of anopheline CP evolution is thus one of relative stasis for a majority of single-copy orthologs, juxtaposed with consistent concerted evolution of a subset of genes.

Anophelines identify hosts, oviposition sites, and other environmental cues through specialized chemosensory membrane-bound receptors. We examined three of the major gene families that encode these molecules: the odorant receptors (*ORs*), gustatory receptors (*GRs*), and variant ionotropic glutamate receptors (*IRs*). Given the rapid chemosensory gene turnover observed in many other insects, we explored whether varying host preferences of anopheline mosquitoes could be attributed to chemosensory gene gains and losses. Unexpectedly in light of the elevated genome-wide rate of gene turnover, we found that the overall size and content of the chemosensory

Fig. 3. Contrasting evolutionary properties of selected gene functional categories. Examined evolutionary properties of orthologous groups of genes include a measure of amino acid conservation/divergence (evolutionary rate), a measure of selective pressure (d_N/d_S), a measure of gene duplication in terms of mean gene copy-number per species (number of genes), and a measure of ortholog universality in terms of number of species with orthologs (number of species). Notched box plots show medians and extend to the first and third quartiles; their widths are proportional to the number of orthologous groups in each functional category. Functional categories derive from curated lists associated with various functions/processes as well as annotated Gene Ontology or InterPro categories (denoted by asterisks).



gene repertoire are relatively conserved across the genus. CAFE 3 (18) analyses estimated that the most recent common ancestor of the anophelines had approximately 60 genes in each of the *OR* and *GR* families, similar to most extant anophelines (Fig. 4C and fig. S20). Estimated gain/loss rates of *OR* and *GR* genes per million years (error-corrected $\lambda = 1.3 \times 10^{-3}$ for *ORs* and 2.0×10^{-4} for *GRs*) were much lower than the overall level of anopheline gene families. Similarly, we found almost the same number of antennae-expressed *IRs* (~20) in all anopheline genomes. Despite overall conservation in chemosensory gene numbers, we observed several examples of gene gain and loss in specific lineages. Notably, there was a net gain of at least 12 *ORs* in the common ancestor of the *An. gambiae* complex (Fig. 4C).

OR and *GR* gene repertoire stability may derive from their roles in several critical behaviors. Host preference differences are likely to be governed by a combination of functional divergence and transcriptional modulation of orthologs. This model is supported by studies of antennal transcriptomes in the major malaria vector *An. gambiae* (35) and comparisons between this vector and its morphologically identical sibling *An. quadriannulatus* (36), a very closely related species that plays no role in malaria transmission (despite vectorial competence) because it does

not specialize on human hosts. Furthermore, we found that many subfamilies of *ORs* and *GRs* showed evidence of positive selection (19 of 53 *ORs*; 17 of 59 *GRs*) across the genus, suggesting potential functional divergence.

Several blood feeding-related behaviors in mosquitoes are also regulated by peptide hormones (37). These peptides are synthesized, processed, and released from nervous and endocrine systems and elicit their effects through binding appropriate receptors in target tissues (38). In total, 39 peptide hormones were identified from each of the sequenced anophelines (fig. S21). Notably, no ortholog of the well-characterized head peptide (HP) hormone of the culicine mosquito *Aedes aegypti* was identified in any of the assemblies. In *Ae. aegypti*, HP is responsible for inhibiting host-seeking behavior after a blood meal (39). Because anophelines broadly exhibit similar behavior (40), the absence of HP from the entire clade suggests they may have evolved a novel mechanism to inhibit excess blood feeding. Similarly, no ortholog of insulin growth factor 1 (*IGF1*) was identified in any anophelines even though *IGF1* orthologs have been identified in other dipterans, including *D. melanogaster* (41) and *Ae. aegypti* (42). *IGF1* is a key component of the insulin/insulin growth factor 1 signaling (IIS) cascade, which regulates processes including innate immunity, reproduction, metabolism,

and life span (43). Nevertheless, other members of the IIS cascade are present, and four insulin-like peptides are found in a compact cluster with gene arrangements conserved across anophelines (fig. S22). This raises questions regarding the modification of IIS signaling in the absence of *IGF1* and the functional importance of this conserved genomic arrangement.

Epigenetic mechanisms affect many biological processes by modulation of chromatin structure, telomere remodeling, and transcriptional control. Of the 215 epigenetic regulatory genes in *D. melanogaster* (44), we identified 169 putative *An. gambiae* orthologs (table S32), which suggested the presence of mechanisms of epigenetic control in *Anopheles* and *Drosophila*. We find, however, that retrotransposition may have contributed to the functional divergence of at least one gene associated with epigenetic regulation. The ubiquitin-conjugating enzyme *E2D* (orthologous to *effete* (45) in *D. melanogaster*) duplicated via retrotransposition in an early anopheline ancestor, and the retrotransposed copy is maintained in a subset of anophelines. Although the entire amino acid sequence of *E2D* is perfectly conserved between *An. gambiae* and *D. melanogaster*, the retrogenes are highly divergent (Fig. 5A) and may contribute to functional diversification within the genus.

Saliva is integral to blood feeding; it impairs host hemostasis and also affects inflammation and immunity. In *An. gambiae*, the salivary proteome is estimated to contain the products of at least 75 genes, most being expressed solely in the adult female salivary glands. Comparative analyses indicate that anopheline salivary proteins are subject to strong evolutionary pressures, and these genes exhibit an accelerated pace of evolution, as well as a very high rate of gain/loss (Fig. 3 and fig. S23). Polymorphisms within *An. gambiae* populations from limited sets of salivary genes were previously found to carry signatures of positive selection (46). Sequence analysis across the anophelines shows that salivary genes have the highest incidence of positively selected codons among the seven gene classes (fig. S24), indicating that coevolution with vertebrate hosts is a powerful driver of natural selection in salivary proteomes. Moreover, salivary proteins also exhibit functional diversification through new gene creation. Sequence similarity, intron-exon boundaries, and secondary structure prediction point to the birth of the *SG7/SG7-2* inflammation-inhibiting (47) gene family from the genomic region encoding the C terminus of the 30-kD protein (Fig. 5B), a collagen-binding platelet inhibitor already present in the blood-feeding ancestor of mosquitoes and black flies (48). Based on phylogenetic representation, these events must have occurred before the radiation of anophelines but after separation from the culicines.

Resistance to insecticides and other xenobiotics has arisen independently in many anopheline species, fostered directly and indirectly by anthropogenic environmental modification. Metabolic resistance to insecticides is mediated by

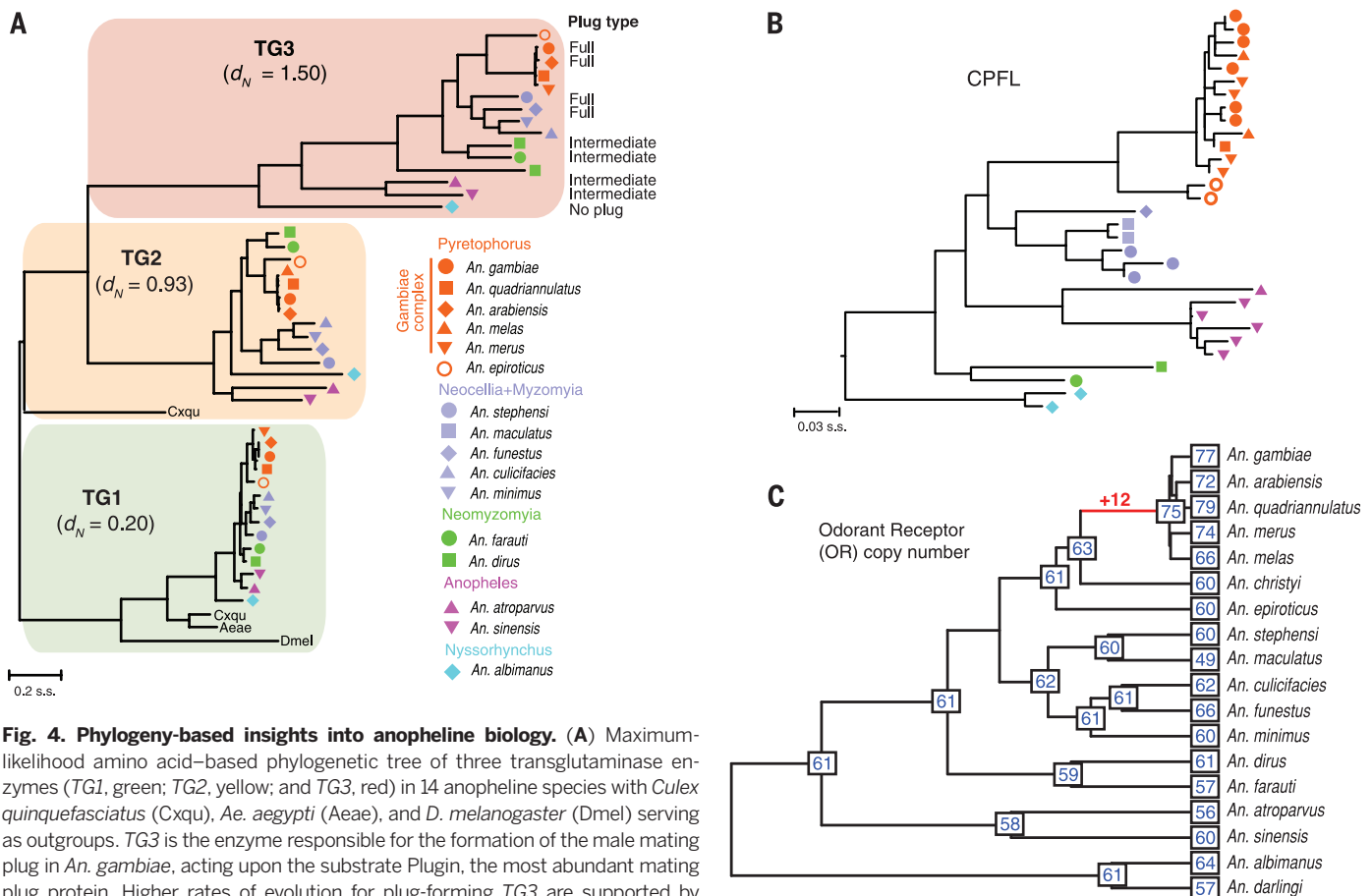


Fig. 4. Phylogeny-based insights into anopheline biology. (A) Maximum-likelihood amino acid-based phylogenetic tree of three transglutaminase enzymes (TG1, green; TG2, yellow; and TG3, red) in 14 anopheline species with *Culex quinquefasciatus* (Cxqu), *Ae. aegypti* (Aeae), and *D. melanogaster* (Dmel) serving as outgroups. TG3 is the enzyme responsible for the formation of the male mating plug in *An. gambiae*, acting upon the substrate Plug_{in}, the most abundant mating plug protein. Higher rates of evolution for plug-forming TG3 are supported by elevated levels of d_N . Mating plug phenotypes are noted where known within the TG3 clade. (B) Concerted evolution in CPFL cuticular proteins. Species symbols used are the same as in (A). In contrast to the TG1/TG2/TG3 phylogeny, CPFL paralogs cluster by subgeneric clades rather than individually recapitulating the species phylogeny. Gene family size variation among species may reflect both gene gain/loss and variation in gene set completeness. (C) OR observed gene counts and inferred ancestral gene counts on an ultrametric phylogeny. At least 10 OR genes were gained on the branch leading to the common ancestor of the *An. gambiae* species complex, although the overall number of OR genes does not vary dramatically across the genus.

multiple gene families, including cytochrome P450s and glutathione *S*-transferases (GSTs), which serve to generally protect against all environmental stresses, both natural and anthropogenic. We manually characterized these gene families in seven anophelines spanning the genus. Despite their large size, gene numbers (87 to 104 P450 genes, 27 to 30 GST genes) within both gene families are highly conserved across all species, although lineage-specific gene duplications and losses are often seen (tables S33 and S34). As with the OR and GR olfaction-related gene families, P450 and GST repertoires may be relatively constant due to the large number of roles they play in anopheline biology. Orthologs of genes associated with insecticide resistance either via up-regulation or coding variation [e.g., *Cyp6m2*, *Cyp6p3* (*Cyp6p9* in *An. funestus*), *Gste2*, and *Gste4*] were found in all species, which suggested that virtually all anophelines likely have genes capable of conferring insecticide resistance through similar mechanisms. Unexpectedly, one member of the P450 family (*Cyp18a1*) with a conserved role in ecdysteroid catabolism [and consequently development and metamorphosis (49)] appears

to have been lost from the ancestor of the *An. gambiae* species complex but is found in the genome and transcriptome assemblies of other species, which indicates that the *An. gambiae* complex may have recently evolved an alternate mechanism for catabolizing ecdysone.

Susceptibility to malaria parasites is a key determinant of vectorial capacity. Dissecting the immune repertoire (50, 51) (table S35) into its constituent phases reveals that classical recognition genes and genes encoding effector enzymes exhibit relatively low levels of sequence divergence. Signal transducers are more divergent in sequence but are conserved in representation across species and rarely duplicated. Cascade modulators, although also divergent, are more lineage-specific and generally have more gene duplications (Fig. 3 and fig. S25). A rare duplication of an immune signal transduction gene occurred through the retrotransposition of the signal transducer and activator of transcription *STAT2* to form the intronless *STAT1* after the divergence of *An. dirus* and *An. farauti* from the rest of the subgenus *Cellia* (Fig. 5C and table S36). It is interesting that an independent

retrotransposition event appears to have created another intronless *STAT* gene in the *An. atroparvus* lineage. In *An. gambiae*, *STAT1* controls the expression of *STAT2* and is activated in response to bacterial challenge (52, 53), and the *STAT* pathway has been demonstrated to mediate immunity to *Plasmodium* (53, 54), so the presence of these relatively new immune signal transducers may have allowed for rewiring of regulatory networks governing immune responses in this subset of anophelines.

Conclusion

Since the discovery over a century ago by Ronald Ross and Giovanni Battista Grassi that human malaria is transmitted by a narrow range of blood-feeding female mosquitoes, the biological basis of malarial vectorial capacity has been a matter of intense interest. Inasmuch as previous successes in the local elimination of malaria have always been accomplished wholly or in part through effective vector control, an increased understanding of vector biology is crucial for continued progress against malarial disease. These 16 new reference genome assemblies provide a

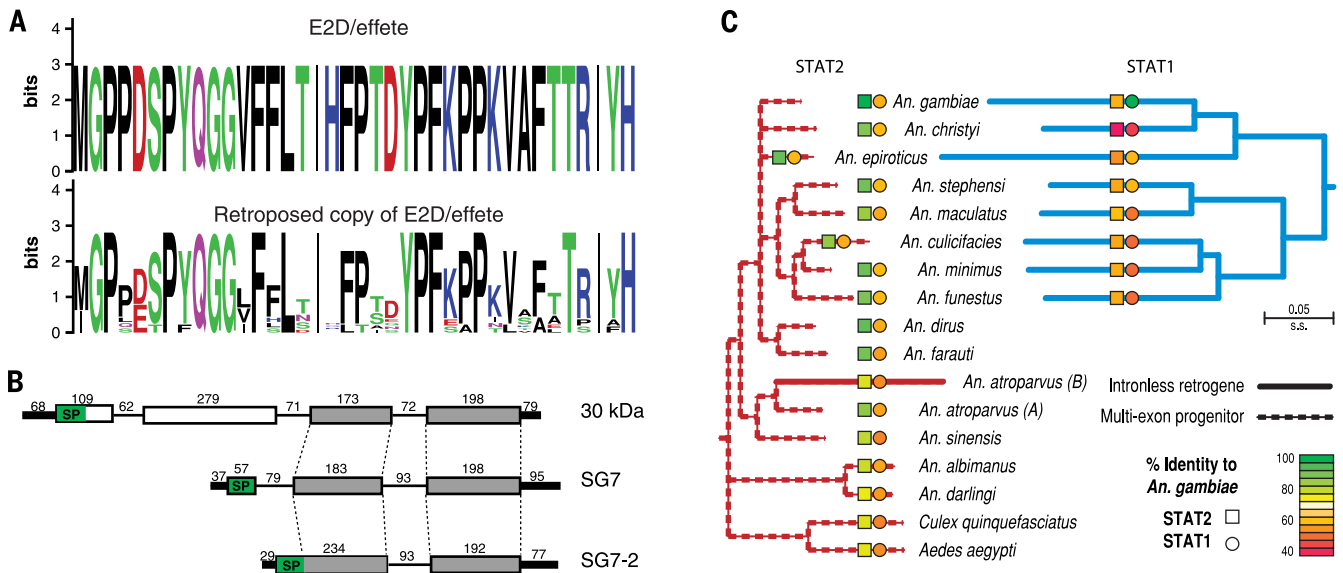


Fig. 5. Genesis of novel anopheline genes. (A) Retrotransposition of the *E2D/effete* gene generated a ubiquitin-conjugating enzyme at the base of the genus, which exhibits much higher sequence divergence than the original multiexon gene. WebLogo plots contrast the amino acid conservation of the original *effete* gene with the diversification of the retrotransposed copy (residues 38 to 75; species represented are *An. minimus*, *An. dirus*, *An. funestus*, *An. farauti*, *An. atroparvus*, *An. sinensis*, *An. darlingi*, and *An. albimanus*). (B) The SG7 salivary protein-encoding gene was generated from the C-terminal half of the 30-kD gene. SG7 then underwent tandem duplication and intron loss to generate another salivary protein, SG7-2. Numerals indicate lengths of segments in base pairs. (C) The origin of *STAT1*, a signal transducer and activator of transcription gene involved in immunity, occurred through a retrotransposition event in the *Cellia* ancestor after divergence from *An. dirus* and *An. farauti*. The intronless *STAT1* is much more divergent than its multiexon progenitor, *STAT2*, and has been maintained in all descendant species. An independent retrotransposition event created a retrogene copy in *An. atroparvus*, which is also more divergent than its progenitor.

SG7 then underwent tandem duplication and intron loss to generate another salivary protein, SG7-2. Numerals indicate lengths of segments in base pairs. (C) The origin of *STAT1*, a signal transducer and activator of transcription gene involved in immunity, occurred through a retrotransposition event in the *Cellia* ancestor after divergence from *An. dirus* and *An. farauti*. The intronless *STAT1* is much more divergent than its multiexon progenitor, *STAT2*, and has been maintained in all descendant species. An independent retrotransposition event created a retrogene copy in *An. atroparvus*, which is also more divergent than its progenitor.

foundation for additional hypothesis generation and testing to further our understanding of the diverse biological traits that determine vectorial capacity.

REFERENCES AND NOTES

- D. P. Kwiatkowski, How malaria has affected the human genome and what human genetics can teach us about malaria. *Am. J. Hum. Genet.* **77**, 171–192 (2005). doi: [10.1086/432519](https://doi.org/10.1086/432519); pmid: [16001361](https://pubmed.ncbi.nlm.nih.gov/16001361/)
- A. Cohuet, C. Harris, V. Robert, D. Fontenille, Evolutionary forces on *Anopheles*: What makes a malaria vector? *Trends Parasitol.* **26**, 130–136 (2010). doi: [10.1016/j.pt.2009.12.001](https://doi.org/10.1016/j.pt.2009.12.001); pmid: [20056485](https://pubmed.ncbi.nlm.nih.gov/20056485/)
- S. Manguin, P. Carnivale, J. Mouchet, *Biodiversity of Malaria in the World* (John Libbey Eurotext, Paris, 2008).
- R. A. Holt *et al.*, The genome sequence of the malaria mosquito *Anopheles gambiae*. *Science* **298**, 129–149 (2002). doi: [10.1126/science.1076181](https://doi.org/10.1126/science.1076181); pmid: [12364791](https://pubmed.ncbi.nlm.nih.gov/12364791/)
- O. Marinotti *et al.*, The genome of *Anopheles darlingi*, the main neotropical malaria vector. *Nucleic Acids Res.* **41**, 7387–7400 (2013). doi: [10.1093/nar/gkt484](https://doi.org/10.1093/nar/gkt484); pmid: [23761445](https://pubmed.ncbi.nlm.nih.gov/23761445/)
- D. Zhou *et al.*, Genome sequence of *Anopheles sinensis* provides insight into genetics basis of mosquito competence for malaria parasites. *BMC Genomics* **15**, 42 (2014). pmid: [24438588](https://pubmed.ncbi.nlm.nih.gov/24438588/)
- X. Jiang *et al.*, Genome analysis of a major urban malaria vector mosquito, *Anopheles stephensi*. *Genome Biol.* **15**, 459 (2014). doi: [10.1186/s13059-014-0459-2](https://doi.org/10.1186/s13059-014-0459-2); pmid: [25244985](https://pubmed.ncbi.nlm.nih.gov/25244985/)
- D. E. Neafsey *et al.*, The evolution of the *Anopheles* 16 genomes project. *Genes Genomes Genet.* **3**, 1191–1194 (2013). doi: [10.1534/g3.113.006247](https://doi.org/10.1534/g3.113.006247); pmid: [23708298](https://pubmed.ncbi.nlm.nih.gov/23708298/)
- M. C. Fontaine *et al.*, Extensive introgression in a malaria vector species complex revealed by phylogenomics. *Science* **346**, 1258524 (2014).
- M. Moreno *et al.*, Complete mtDNA genomes of *Anopheles darlingi* and an approach to anopheline divergence time. *Malar. J.* **9**, 127 (2010). doi: [10.1186/1475-2875-9-127](https://doi.org/10.1186/1475-2875-9-127); pmid: [20470395](https://pubmed.ncbi.nlm.nih.gov/20470395/)
- S. Genere *et al.*, High-quality draft assemblies of mammalian genomes from massively parallel sequence data. *Proc. Natl. Acad. Sci. U.S.A.* **108**, 1513–1518 (2011). doi: [10.1073/pnas.1017351108](https://doi.org/10.1073/pnas.1017351108); pmid: [21187386](https://pubmed.ncbi.nlm.nih.gov/21187386/)
- Materials and methods are available as supplementary materials on Science Online.
- C. Holt, M. Yandell, MAKER2: An annotation pipeline and genome-database management tool for second-generation genome projects. *BMC Bioinformatics* **12**, 491 (2011). doi: [10.1186/1471-2105-12-491](https://doi.org/10.1186/1471-2105-12-491); pmid: [22192575](https://pubmed.ncbi.nlm.nih.gov/22192575/)
- M. Coluzzi, A. Sabatini, A. della Torre, M. A. Di Deco, V. Petrarca, A polyploid chromosome analysis of the *Anopheles gambiae* species complex. *Science* **298**, 1415–1418 (2002). doi: [10.1126/science.1077769](https://doi.org/10.1126/science.1077769); pmid: [12364623](https://pubmed.ncbi.nlm.nih.gov/12364623/)
- M. Kamali *et al.*, Multigene phylogenetics reveals temporal diversification of major African malaria vectors. *PLOS ONE* **9**, e93580 (2014). doi: [10.1371/journal.pone.0093580](https://doi.org/10.1371/journal.pone.0093580); pmid: [24705448](https://pubmed.ncbi.nlm.nih.gov/24705448/)
- M. A. Toups, M. W. Hahn, Retrogenes reveal the direction of sex-chromosome evolution in mosquitoes. *Genetics* **186**, 763–766 (2010). doi: [10.1534/genetics.110.118794](https://doi.org/10.1534/genetics.110.118794); pmid: [20660646](https://pubmed.ncbi.nlm.nih.gov/20660646/)
- D. A. Baker, S. Russell, Role of testis-specific gene expression in sex-chromosome evolution of *Anopheles gambiae*. *Genetics* **189**, 1117–1120 (2011). doi: [10.1534/genetics.111.133157](https://doi.org/10.1534/genetics.111.133157); pmid: [21890740](https://pubmed.ncbi.nlm.nih.gov/21890740/)
- M. V. Han, G. W. C. Thomas, J. Lugo-Martinez, M. W. Hahn, Estimating gene gain and loss rates in the presence of error in genome assembly and annotation using CAFE 3. *Mol. Biol. Evol.* **30**, 1987–1997 (2013). doi: [10.1093/molbev/mst100](https://doi.org/10.1093/molbev/mst100); pmid: [23709260](https://pubmed.ncbi.nlm.nih.gov/23709260/)
- M. W. Hahn, M. V. Han, S.-G. Han, Gene family evolution across 12 *Drosophila* genomes. *PLOS Genet.* **3**, e197 (2007). doi: [10.1371/journal.pgen.0030197](https://doi.org/10.1371/journal.pgen.0030197); pmid: [17997610](https://pubmed.ncbi.nlm.nih.gov/17997610/)
- Z. Yang, PAML 4: Phylogenetic analysis by maximum likelihood. *Mol. Biol. Evol.* **24**, 1586–1591 (2007). doi: [10.1093/molbev/msm088](https://doi.org/10.1093/molbev/msm088); pmid: [17483113](https://pubmed.ncbi.nlm.nih.gov/17483113/)
- T. Dottorini *et al.*, A genome-wide analysis in *Anopheles gambiae* mosquitoes reveals 46 male accessory gland genes, possible modulators of female behavior. *Proc. Natl. Acad. Sci. U.S.A.* **104**, 16215–16220 (2007). doi: [10.1073/pnas.0703904104](https://doi.org/10.1073/pnas.0703904104); pmid: [17901209](https://pubmed.ncbi.nlm.nih.gov/17901209/)
- F. Baldini, P. Gabrieli, D. W. Rogers, F. Catteruccia, Function and composition of male accessory gland secretions in *Anopheles gambiae*: A comparison with other insect vectors of infectious diseases. *Pathog. Glob. Health* **106**, 82–93 (2012). doi: [10.1179/204773212Y.0000000016](https://doi.org/10.1179/204773212Y.0000000016); pmid: [22943543](https://pubmed.ncbi.nlm.nih.gov/22943543/)
- R. Assis, Q. Zhou, D. Bachtrog, Sex-biased transcriptome evolution in *Drosophila*. *Genome Biol. Evol.* **4**, 1189–1200 (2012). doi: [10.1093/gbe/evs093](https://doi.org/10.1093/gbe/evs093); pmid: [23097318](https://pubmed.ncbi.nlm.nih.gov/23097318/)
- S. Grath, J. Parsch, Rate of amino acid substitution is influenced by the degree and conservation of male-biased transcription over 50 myr of *Drosophila* evolution. *Genome Biol. Evol.* **4**, 346–359 (2012). doi: [10.1093/gbe/evs012](https://doi.org/10.1093/gbe/evs012); pmid: [22321769](https://pubmed.ncbi.nlm.nih.gov/22321769/)
- J. C. Perry, P. W. Harrison, J. E. Mank, The ontogeny and evolution of sex-biased gene expression in *Drosophila melanogaster*. *Mol. Biol. Evol.* **31**, 1206–1219 (2014). doi: [10.1093/molbev/msu072](https://doi.org/10.1093/molbev/msu072); pmid: [24526011](https://pubmed.ncbi.nlm.nih.gov/24526011/)
- D. W. Rogers *et al.*, Transglutaminase-mediated semen coagulation controls sperm storage in the malaria mosquito. *PLOS Biol.* **7**, e1000272 (2009). doi: [10.1371/journal.pbio.1000272](https://doi.org/10.1371/journal.pbio.1000272); pmid: [20027206](https://pubmed.ncbi.nlm.nih.gov/20027206/)
- F. Baldini *et al.*, The interaction between a sexually transferred steroid hormone and a female protein regulates oogenesis in the malaria mosquito *Anopheles gambiae*. *PLOS Biol.* **11**, e1001695 (2013). doi: [10.1371/journal.pbio.1001695](https://doi.org/10.1371/journal.pbio.1001695); pmid: [24204210](https://pubmed.ncbi.nlm.nih.gov/24204210/)
- W. R. Shaw *et al.*, Mating activates the heme peroxidase HPX15 in the sperm storage organ to ensure fertility in *Anopheles gambiae*. *Proc. Natl. Acad. Sci. U.S.A.* **111**, 5854–5859 (2014). doi: [10.1073/pnas.1401715111](https://doi.org/10.1073/pnas.1401715111); pmid: [24711401](https://pubmed.ncbi.nlm.nih.gov/24711401/)
- J. H. Willis, Structural cuticular proteins from arthropods: Annotation, nomenclature, and sequence characteristics in the genomics era. *Insect Biochem. Mol. Biol.* **40**, 189–204 (2010). doi: [10.1016/j.ibmb.2010.02.001](https://doi.org/10.1016/j.ibmb.2010.02.001); pmid: [20171281](https://pubmed.ncbi.nlm.nih.gov/20171281/)
- R. S. Cornman *et al.*, Annotation and analysis of a large cuticular protein family with the R&R Consensus in *Anopheles gambiae*. *BMC Genomics* **9**, 22 (2008). doi: [10.1186/1471-2164-9-22](https://doi.org/10.1186/1471-2164-9-22); pmid: [18205929](https://pubmed.ncbi.nlm.nih.gov/18205929/)
- R. S. Cornman, J. H. Willis, Extensive gene amplification and concerted evolution within the CPR family of cuticular proteins in mosquitoes. *Insect Biochem. Mol. Biol.* **38**, 661–676 (2008). doi: [10.1016/j.ibmb.2008.04.001](https://doi.org/10.1016/j.ibmb.2008.04.001); pmid: [18510978](https://pubmed.ncbi.nlm.nih.gov/18510978/)
- R. S. Cornman, J. H. Willis, Annotation and analysis of low-complexity protein families of *Anopheles gambiae* that are associated with cuticle. *Insect Mol. Biol.* **18**, 607–622 (2009). doi: [10.1111/j.1365-2583.2009.00902.x](https://doi.org/10.1111/j.1365-2583.2009.00902.x); pmid: [19754739](https://pubmed.ncbi.nlm.nih.gov/19754739/)
- R. S. Cornman, Molecular evolution of *Drosophila* cuticular protein genes. *PLOS ONE* **4**, e8345 (2009). doi: [10.1371/journal.pone.0008345](https://doi.org/10.1371/journal.pone.0008345); pmid: [20019874](https://pubmed.ncbi.nlm.nih.gov/20019874/)
- T. Togawa, W. A. Dunn, A. C. Emmons, J. Nagao, J. H. Willis, Developmental expression patterns of cuticular protein genes

- with the R&R Consensus from *Anopheles gambiae*. *Insect Biochem. Mol. Biol.* **38**, 508–519 (2008). doi: [10.1016/j.ibmb.2007.12.008](https://doi.org/10.1016/j.ibmb.2007.12.008); pmid: 18405829
35. D. C. Rinker *et al.*, Blood meal-induced changes to antennal transcriptome profiles reveal shifts in odor sensitivities in *Anopheles gambiae*. *Proc. Natl. Acad. Sci. U.S.A.* **110**, 8260–8265 (2013). doi: [10.1073/pnas.1302562110](https://doi.org/10.1073/pnas.1302562110); pmid: 23630291
36. D. C. Rinker *et al.*, Antennal transcriptome profiles of anopheline mosquitoes reveal human host olfactory specialization in *Anopheles gambiae*. *BMC Genomics* **14**, 749 (2013). doi: [10.1186/1471-2164-14-749](https://doi.org/10.1186/1471-2164-14-749); pmid: 24182346
37. M. Altstein, D. R. Nässel, Neuropeptide signaling in insects. *Adv. Exp. Med. Biol.* **692**, 155–165 (2010). doi: [10.1007/978-1-4419-6902-6_8](https://doi.org/10.1007/978-1-4419-6902-6_8); pmid: 21189678
38. J. P. Goetze, I. Hunter, S. K. Lippert, L. Bardram, J. F. Rehfeld, Processing-independent analysis of peptide hormones and prohormones in plasma. *Front. Biosci. (Landmark Ed.)* **17**, 1804–1815 (2012). doi: [10.2741/4020](https://doi.org/10.2741/4020); pmid: 22201837
39. T. H. Stracker, S. Thompson, G. L. Grossman, M. A. Riehle, M. R. Brown, Characterization of the AeaHP gene and its expression in the mosquito *Aedes aegypti* (Diptera: Culicidae). *J. Med. Entomol.* **39**, 331–342 (2002). doi: [10.1603/0022-2585-39.2.331](https://doi.org/10.1603/0022-2585-39.2.331); pmid: 11931033
40. C. D. de Oliveira, W. P. Tadei, F. C. Abdalla, P. F. Paolucci Pimenta, O. Marinotti, Multiple blood meals in *Anopheles darlingi* (Diptera: Culicidae). *J. Vector Ecol.* **37**, 351–358 (2012). doi: [10.1111/j.1948-7134.2012.00238.x](https://doi.org/10.1111/j.1948-7134.2012.00238.x); pmid: 23181859
41. N. Okamoto *et al.*, A fat body-derived IGF-like peptide regulates postfeeding growth in *Drosophila*. *Dev. Cell* **17**, 885–891 (2009). doi: [10.1016/j.devcel.2009.10.008](https://doi.org/10.1016/j.devcel.2009.10.008); pmid: 20059957
42. M. A. Riehle, Y. Fan, C. Cao, M. R. Brown, Molecular characterization of insulin-like peptides in the yellow fever mosquito, *Aedes aegypti*: Expression, cellular localization, and phylogeny. *Peptides* **27**, 2547–2560 (2006). doi: [10.1016/j.peptides.2006.07.016](https://doi.org/10.1016/j.peptides.2006.07.016); pmid: 16934367
43. Y. Antonova, A. J. Arik, W. Moore, M. M. Riehle, M. R. Brown, in *Insect Endocrinology*, L. I. Gilbert, Ed. (Academic Press, 2012), pp. 63–92.
44. A. Swaminathan, A. Gajan, L. A. Pile, Epigenetic regulation of transcription in *Drosophila*. *Front. Biosci. (Landmark Ed.)* **17**, 909–937 (2012). doi: [10.2741/3964](https://doi.org/10.2741/3964); pmid: 22201781
45. F. Cipressa *et al.*, Effete, a *Drosophila* chromatin-associated ubiquitin-conjugating enzyme that affects telomeric and heterochromatic position effect variegation. *Genetics* **195**, 147–158 (2013). doi: [10.1534/genetics.113.153320](https://doi.org/10.1534/genetics.113.153320); pmid: 23821599
46. B. Arcà *et al.*, Positive selection drives accelerated evolution of mosquito salivary genes associated with blood-feeding. *Insect Mol. Biol.* **23**, 122–131 (2014). doi: [10.1111/imb.12068](https://doi.org/10.1111/imb.12068); pmid: 24237399
47. H. Isawa, M. Yuda, Y. Orito, Y. Chinzei, A mosquito salivary protein inhibits activation of the plasma contact system by binding to factor XII and high molecular weight kininogen. *J. Biol. Chem.* **277**, 27651–27658 (2002). doi: [10.1074/jbc.M203505200](https://doi.org/10.1074/jbc.M203505200); pmid: 12011093
48. E. Calvo *et al.*, Aegyptin, a novel mosquito salivary gland protein, specifically binds to collagen and prevents its interaction with platelet glycoprotein VI, integrin alpha2beta1, and von Willebrand factor. *J. Biol. Chem.* **282**, 26928–26938 (2007). doi: [10.1074/jbc.M705669200](https://doi.org/10.1074/jbc.M705669200); pmid: 17650501
49. E. Guittard *et al.*, CYP18A1, a key enzyme of *Drosophila* steroid hormone inactivation, is essential for metamorphosis. *Dev. Biol.* **349**, 35–45 (2011). doi: [10.1016/j.ydbio.2010.09.023](https://doi.org/10.1016/j.ydbio.2010.09.023); pmid: 20932968
50. R. M. Waterhouse *et al.*, Evolutionary dynamics of immune-related genes and pathways in disease-vector mosquitoes. *Science* **316**, 1738–1743 (2007). doi: [10.1126/science.1139862](https://doi.org/10.1126/science.1139862); pmid: 17588928
51. L. C. Bartholomay *et al.*, Pathogenomics of *Culex quinquefasciatus* and meta-analysis of infection responses to diverse pathogens. *Science* **330**, 88–90 (2010). doi: [10.1126/science.1193162](https://doi.org/10.1126/science.1193162); pmid: 20929811
52. C. Barillas-Mury, Y. S. Han, D. Seeley, F. C. Kafatos, *Anopheles gambiae* Ag-STAT, a new insect member of the STAT family, is activated in response to bacterial infection. *EMBO J.* **18**, 959–967 (1999). doi: [10.1093/emboj/18.4.959](https://doi.org/10.1093/emboj/18.4.959); pmid: 10022838
53. L. Gupta *et al.*, The STAT pathway mediates late-phase immunity against *Plasmodium* in the mosquito *Anopheles gambiae*. *Cell Host Microbe* **5**, 498–507 (2009). doi: [10.1016/j.chom.2009.04.003](https://doi.org/10.1016/j.chom.2009.04.003); pmid: 19454353
54. A. C. Bahia *et al.*, The JAK-STAT pathway controls *Plasmodium vivax* load in early stages of *Anopheles aquasalis* infection. *PLOS Negl. Trop. Dis.* **5**, e1317 (2011). doi: [10.1371/journal.pntd.0001317](https://doi.org/10.1371/journal.pntd.0001317); pmid: 22069502

ACKNOWLEDGMENTS

All sequencing reads and genome assemblies have been submitted to the National Center for Biotechnology Information (umbrella BioProject ID, PRJNA67511). Genome and transcriptome assemblies are also available from VectorBase (<https://vectorbase.org>) and the Broad Institute (<https://olive.broadinstitute.org/collections/anopheles.4>). The authors acknowledge the NIH Eukaryotic Pathogen and Disease Vector Sequencing Project Working Group for guidance and development of this project. Sequence data generation was supported at the Broad Institute by the National Human Genome Research Institute (U54 HG003067). We thank the many members of the Broad Institute Genomics Platform and Genome Sequencing and Analysis Program who contributed to sequencing data generation and analysis.

SUPPLEMENTARY MATERIALS

www.sciencemag.org/content/347/6217/1258522/suppl/DC1
Materials and Methods
Supplementary Text
Figs. S1 to S25
Tables S1 to S36
References (55–248)

9 July 2014; accepted 14 November 2014
Published online 27 November 2014;
[10.1126/science.1258522](https://doi.org/10.1126/science.1258522)

EXTENDED PDF FORMAT
SPONSORED BY



Highly evolvable malaria vectors: The genomes of 16 *Anopheles* mosquitoes

Daniel E. Neafsey, Robert M. Waterhouse, Mohammad R. Abai, Sergey S. Aganezov, Max A. Alekseyev, James E. Allen, James Amon, Bruno Arcà, Peter Arensburger, Gleb Artemov, Lauren A. Assour, Hamidreza Basseri, Aaron Berlin, Bruce W. Birren, Stephanie A. Blandin, Andrew I. Brockman, Thomas R. Burkot, Austin Burt, Clara S. Chan, Cedric Chauve, Joanna C. Chiu, Mikkel Christensen, Carlo Costantini, Victoria L. M. Davidson, Elena Deligianni, Tania Dottorini, Vicky Dritsou, Stacey B. Gabriel, Wamdaogo M. Guelbeogo, Andrew B. Hall, Mira V. Han, Thuang Hlaing, Daniel S. T. Hughes, Adam M. Jenkins, Xiaofang Jiang, Irwin Jungreis, Evdoxia G. Kakani, Maryam Kamali, Petri Kemppainen, Ryan C. Kennedy, Ioannis K. Kirmitzoglou, Lizette L. Koekemoer, Njoroge Laban, Nicholas Langridge, Mara K. N. Lawniczak, Manolis Lirakis, Neil F. Lobo, Ernesto Lowy, Robert M. MacCallum, Chunhong Mao, Gareth Maslen, Charles Mbogo, Jenny McCarthy, Kristin Michel, Sara N. Mitchell, Wendy Moore, Katherine A. Murphy, Anastasia N. Naumenko, Tony Nolan, Eva M. Novoa, Samantha O'Loughlin, Chioma Oringanje, Mohammad A. Oshaghi, Nazy Pakpour, Philippos A. Papatianos, Ashley N. Peery, Michael Povelones, Anil Prakash, David P. Price, Ashok Rajaraman, Lisa J. Reimer, David C. Rinker, Antonis Rokas, Tanya L. Russell, N'Fale Sagnon, Maria V. Sharakhova, Terrance Shea, Felipe A. Simão, Frederic Simard, Michel A. Slotman, Pradya Somboon, Vladimir Stegny, Claudio J. Struchiner, Gregg W. C. Thomas, Marta Tojo, Pantelis Topalis, José M. C. Tubio, Maria F. Unger, John Vontas, Catherine Walton, Craig S. Wilding, Judith H. Willis, Yi-Chieh Wu, Guiyun Yan, Evgeny M. Zdobnov, Xiaofan Zhou, Flaminia Catteruccia, George K. Christophides, Frank H. Collins, Robert S. Cornman, Andrea Crisanti, Martin J. Donnelly, Scott J. Emrich, Michael C. Fontaine, William Gelbart, Matthew W. Hahn, Immo A. Hansen, Paul I. Howell, Fotis C. Kafatos, Manolis Kellis, Daniel Lawson, Christos Louis, Shirley Luckhart, Marc A. T. Muskavitch, José M. Ribeiro, Michael A. Riehle, Igor V. Sharakhov, Zhijian Tu, Laurence J. Zwiebel and Nora J. Besansky (November 27, 2014)

Science **347** (6217), . [doi: 10.1126/science.1258522] originally published online November 27, 2014

Science (print ISSN 0036-8075; online ISSN 1095-9203) is published weekly, except the last week in December, by the American Association for the Advancement of Science, 1200 New York Avenue NW, Washington, DC 20005. Copyright 2016 by the American Association for the Advancement of Science; all rights reserved. The title *Science* is a registered trademark of AAAS.

Editor's Summary

Mosquito adaptability across genomes

Virtually everyone has first-hand experience with mosquitoes. Few recognize the subtle biological distinctions among these bloodsucking flies that render some bites mere nuisances and others the initiation of a potentially life-threatening infection. By sequencing the genomes of several mosquitoes in depth, Neafsey *et al.* and Fontaine *et al.* reveal clues that explain the mystery of why only some species of one genus of mosquitoes are capable of transmitting human malaria (see the Perspective by Clark and Messer).

Science, this issue 10.1126/science.1258524 and 10.1126/science.1258522; see also p. 27

This copy is for your personal, non-commercial use only.

- Article Tools** Visit the online version of this article to access the personalization and article tools:
<http://science.sciencemag.org/content/347/6217/1258522>
- Permissions** Obtain information about reproducing this article:
<http://www.sciencemag.org/about/permissions.dtl>

Science (print ISSN 0036-8075; online ISSN 1095-9203) is published weekly, except the last week in December, by the American Association for the Advancement of Science, 1200 New York Avenue NW, Washington, DC 20005. Copyright 2016 by the American Association for the Advancement of Science; all rights reserved. The title *Science* is a registered trademark of AAAS.